

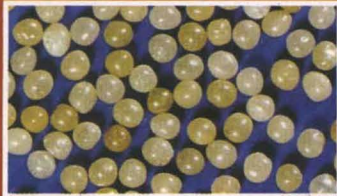
Estd. 1960

IDTGO

NATURAL DIAMONDS

Reliable Consistent

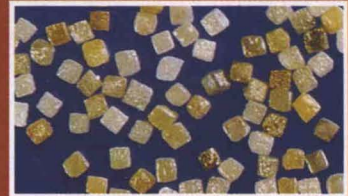
FOR DRILLING, DRESSING



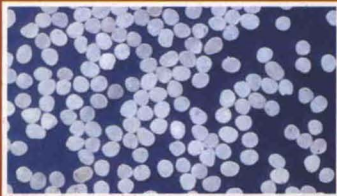
DRILLINGS
Processed / Polished



CONGO
Rounds



CONGO
Cubes



ROTARY
Processed / Polished



LONGS
Processed / Polished



LONGS
Processed Polished

FOR ELECTROPLATING, SAWS, WHEELS, DRESSERS



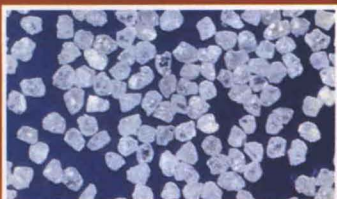
AFRICAN GRITS
Processed - Rounded Edges



CONGO GRITS
Processed - Rounded Edges



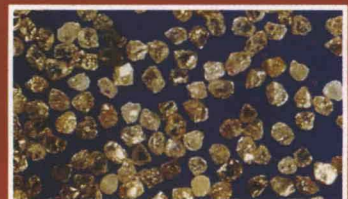
AUSTRALIAN GRITS
Processed - Rounded Edges



AFRICAN GRITS
Crushed - Sharp Edges



CONGO GRITS
Crushed - Sharp Edges



AUSTRALIAN GRITS
Crushed - Sharp Edges

INDUSTRIAL DIAMONDS & TOOLS CO.

MANUFACTURERS AND EXPORTERS OF INDUSTRIAL DIAMOND PRODUCTS

7-B SAGAR VIHAR, 45, KULPATI K. M. MUNSHI MARG, BOMBAY - 400 007, (INDIA)

PHONES : 91 - 22 - 363 3958 / 363 4835 FAX : 91 - 22 - 363 2107



ESTD.-1960

INDUSTRIAL DIAMONDS & TOOLS CO.

MANUFACTURERS AND EXPORTERS OF DIAMOND TOOLS AND PRODUCTS
 7-B SAGAR VIHAR, 45, KULPATI K. M. MUNSHI MARG, BOMBAY-400 007. (INDIA)
 PHONES : (022)-363 3958 / 363 4835 FAX : (022)-363 2107

01-AUG-97

PRICE - LIST (IN US\$/CT.)

=====

" IDTCO " NATURAL DIAMONDS #

=====

CHRISTENSEN SIEVE SIZE	STONES PER CARAT! (S.P.C.)	PREMIUM	STANDARD	
+6		1.50	0.95	
+5		1.50	0.95	
+4	15	1.50	0.95	
+3		1.50	0.95	
+2	to	1.50	0.95	FOR
+1		1.50	0.95	MINING
+A	80	1.50	0.95	BITS
+B		1.50	0.95	
+C		1.50	0.95	

+D		1.10	0.65	
+E	80	1.10	0.65	FOR
+F	to	1.10	0.65	ROTARY
-F+25	300	1.10	0.65	DRESSERS
-25+30		1.10	0.65	

SPECIFIC QUALITIES CAN BE MADE TO ORDER ALSO.

PRICE IN US\$ /CT.

- EX-WORKS, SHIPPING CHARGES 3% EXTRA (MIN.US\$.75)
- TO BE CONFIRMED AT TIME OF ORDER.

PAYMENT

- COD THROUGH BANK OR IN ADVANCE

MANUFACTURERS

- OURSELVES

MAKE IT A HABIT WITH "IDTCO"



ESTD.-1960

INDUSTRIAL DIAMONDS & TOOLS CO.

MANUFACTURERS AND EXPORTERS OF DIAMOND TOOLS AND PRODUCTS
 7-B SAGAR VIHAR, 45, KULPATI K. M. MUNSHI MARG, BOMBAY-400 007, (INDIA)
 PHONES : (022)-363 3958 / 363 4835 FAX : (022)-363 2107

01-AUG-97

PRICE - LIST (IN US\$/CT.)

" IDTCO " NATURAL DIAMONDS

GRITS FOR: SAWS, ELECTROPLATING, WHEELS ETC.

SIZE	PROCESSED - ROUNDED EDGES			CRUSHED - SHARP EDGES		
	AFRICAN (WHITE)	CONGO	AUSTRALIAN	AFRICAN (WHITE)	CONGO	AUSTRALIAN
16-18	0.79	0.57	0.49	0.75	0.53	0.45
18-20	0.79	0.57	0.49	0.75	0.53	0.45
20-25	0.79	0.57	0.49	0.75	0.53	0.45
25-30	0.79	0.57	0.49	0.75	0.53	0.45
30-35	0.79	0.57	0.49	0.75	0.53	0.45
35-40	0.79	0.57	0.49	0.75	0.53	0.45
40-45	0.79	0.57	0.49	0.75	0.53	0.45
45-50	0.79	0.57	0.49	0.75	0.53	0.45
50-60	0.79	0.57	0.49	0.75	0.53	0.45
60-700	0.79	0.57	0.49	0.75	0.53	0.45
	MIXED ORIGIN					
70-80	0.33					
80-100	0.33					
100-120	0.33					
120-140	0.33					
140-170	0.33					
170-200	0.40					
200-230	0.40					
230-270	0.40					
270-325	0.40					
325-400	0.40					
400-500	0.40					

SPECIFIC QUALITIES CAN BE MADE TO ORDER ALSO.

PRICE IN US\$ /CT.

: EX-WORKS, SHIPPING CHARGES 3% EXTRA (MIN. US\$.75)
 : TO BE CONFIRMED AT TIME OF ORDER.

PAYMENT

: COD THROUGH BANK OR IN ADVANCE.

MANUFACTURERS

: OURSELVES

MAKE IT A HABIT WITH "IDTCO"